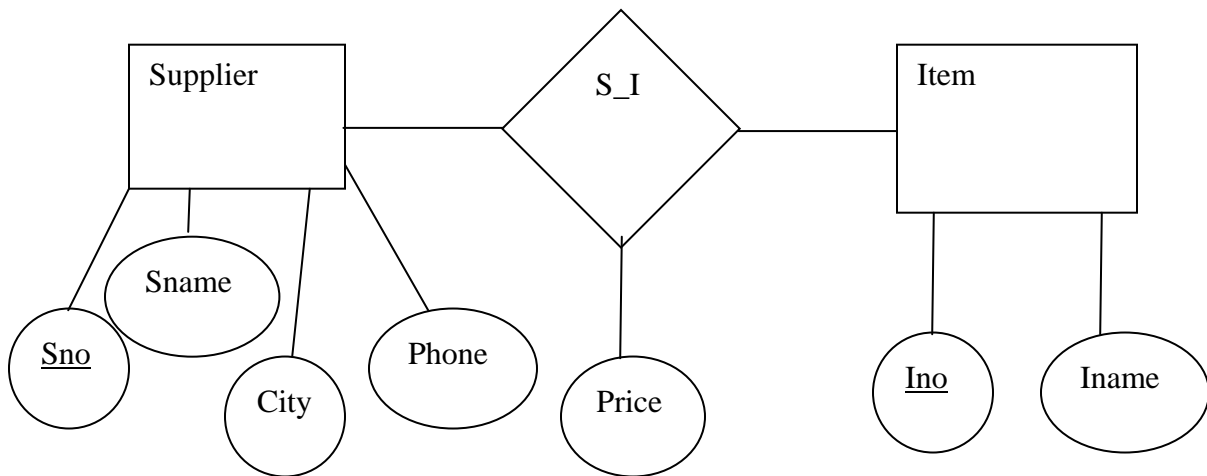


## CS 330 Assignment 3 Winter 2005 Marking Scheme

Each question is of equal value; 10 marks each

**Q1**

- .1 Add a row for the item and put null into the attributes that are not provided.  
Comments about null values in keys causing problems are good, substituting sentinel or special values in place of null in a key is OK. [1 mark]
- .2 Suppliers=(Sno, Sname, City, Phone); Items=(Ino, Iname); S\_I=(Sno, Ino, Price) [2 marks]
- .3 [3 marks]



.4 [4 marks]

